

Exemplos de Aplicações de Imagens Públicas.

Geol. Paulo Roberto Martini, MSc.
martini@dsr.inpe.br
Sessão Especial sobre Produtos Públicos do INPE-OBT
III Simpósio Brasileiro de Geomática.
UNESP-Presidente Prudente 25-28 de julho de 2012.

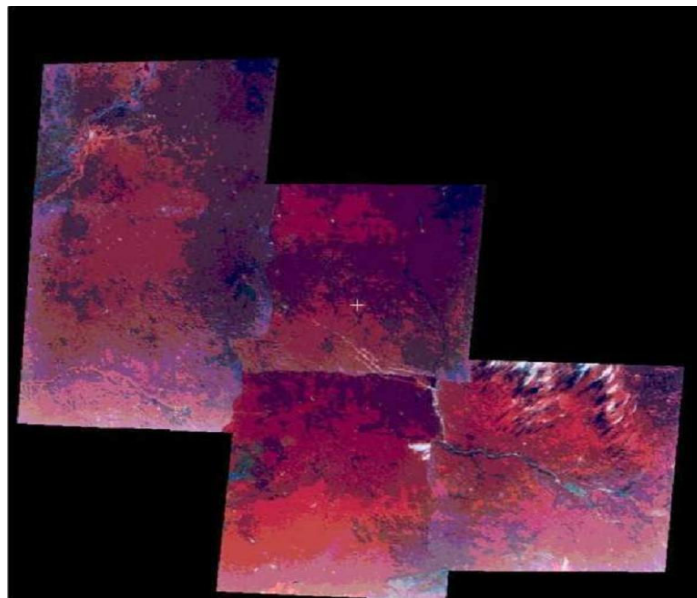
Imagens Públicas: as fontes do conhecimento em SERE

- Imagens CBERS: www.dgi.inpe.br/CDSR
- Imagens LANDSAT 1-2-3-5-7: www.dgi.inpe.br/CDSR
- Imagens RESOURCESAT-2: www.dgi.inpe.br
- Mosaicos SRTM-TOPODATA: www.dpi.inpe.br/topodata
- Mosaicos SRTM: <http://srtm.usgs.gov/data/obtainingdata.html>
- Imagens MODIS: <http://edcimswww.cr.usgs.gov/pub/imswelcome/>
- Mosaicos GEOCOVER: <https://zulu.ssc.nasa.gov/mrsid/>
- Acervo GOOGLE-EARTH: <http://earth.google.com/>
- Imagens ISS: <http://eol.jsc.gov>

MSS-LANDSAT-3

MSS - Landsat 3
Several images
Aug, 1977

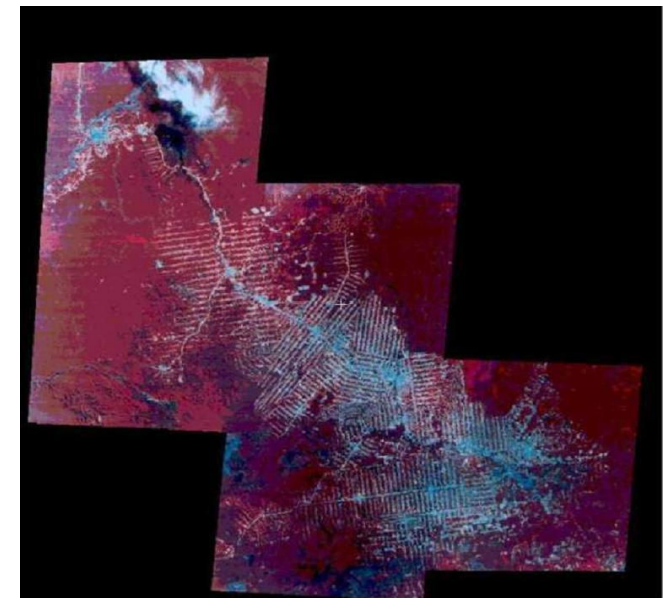
Rondonia State
"Amazon rainforest"

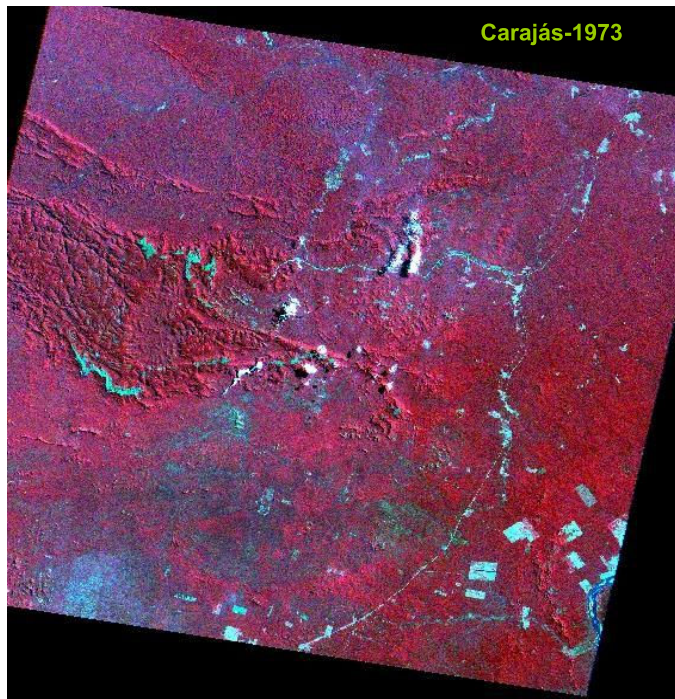
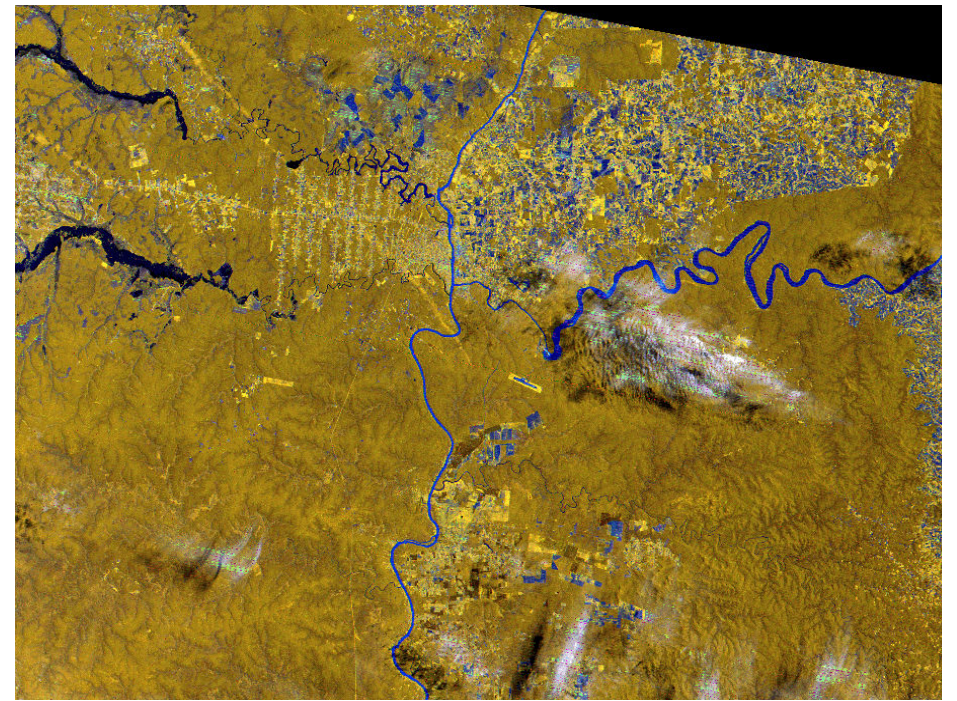


TM-LANDSAT5

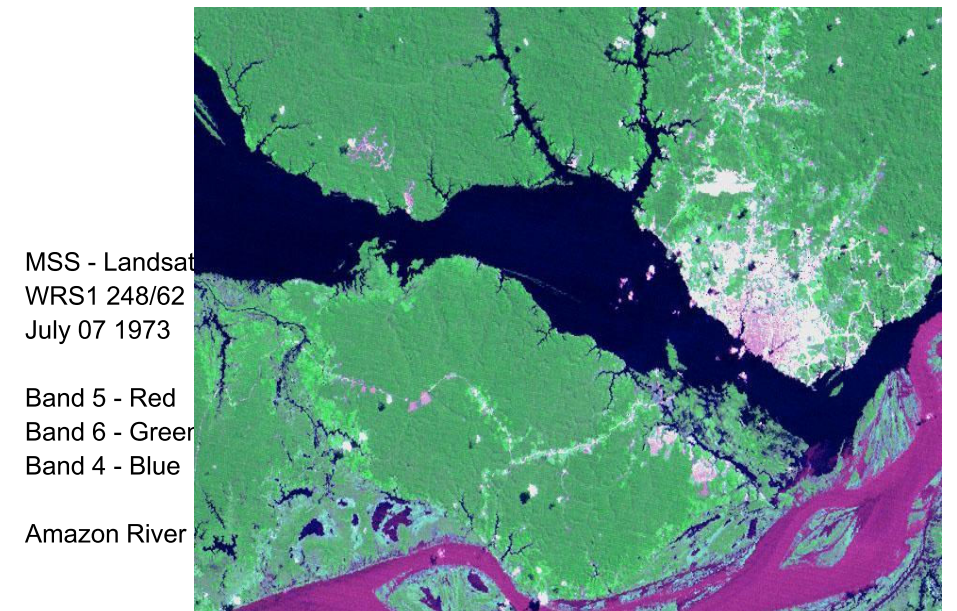
TM - Landsat 5
Several images
Aug, 1997

Rondonia State
"Amazon rainforest"





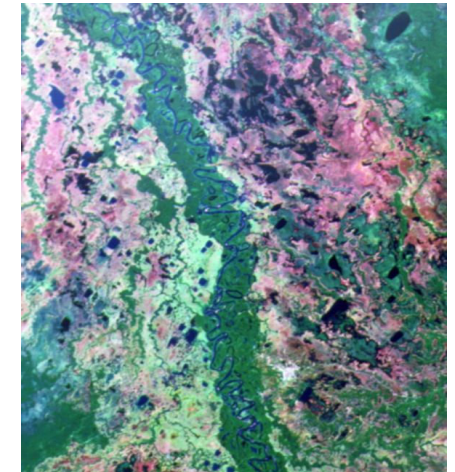
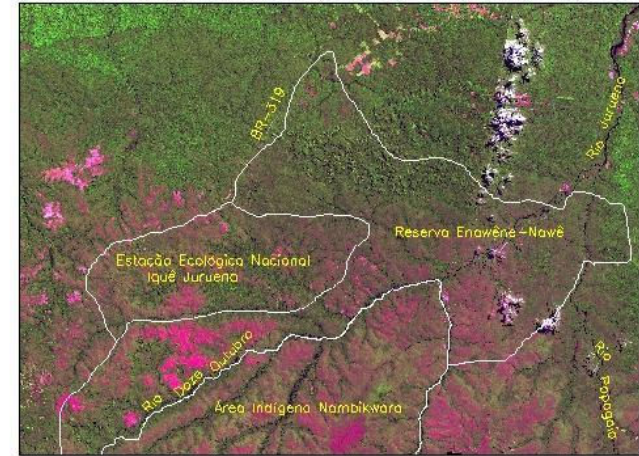
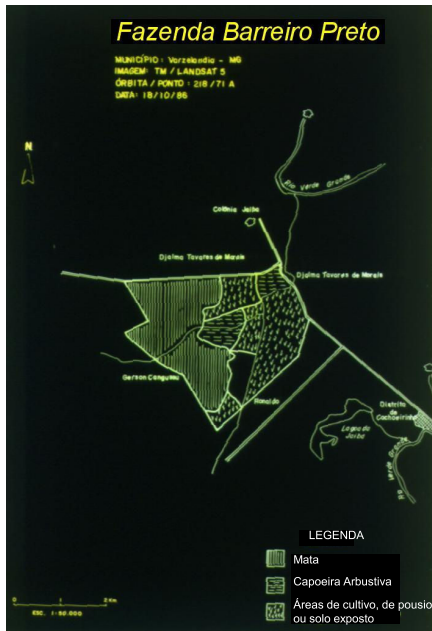
Carajás-1973

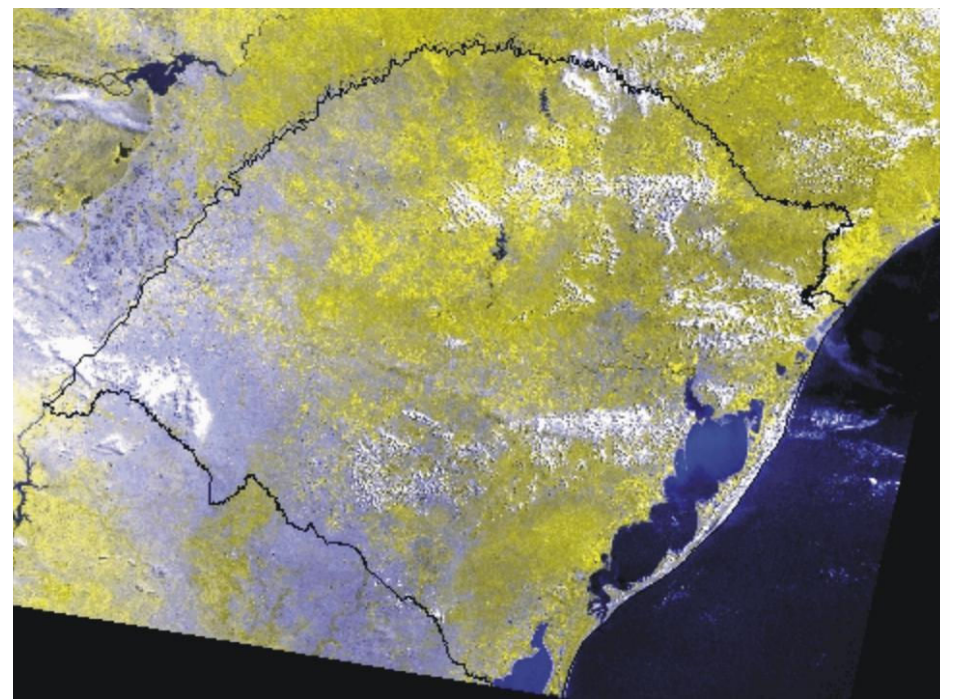
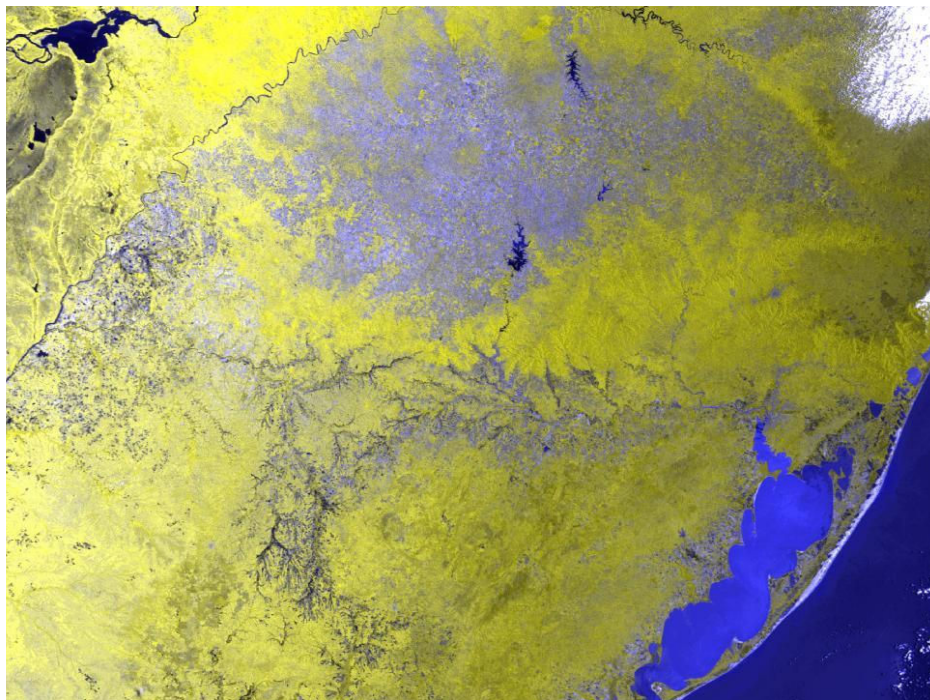
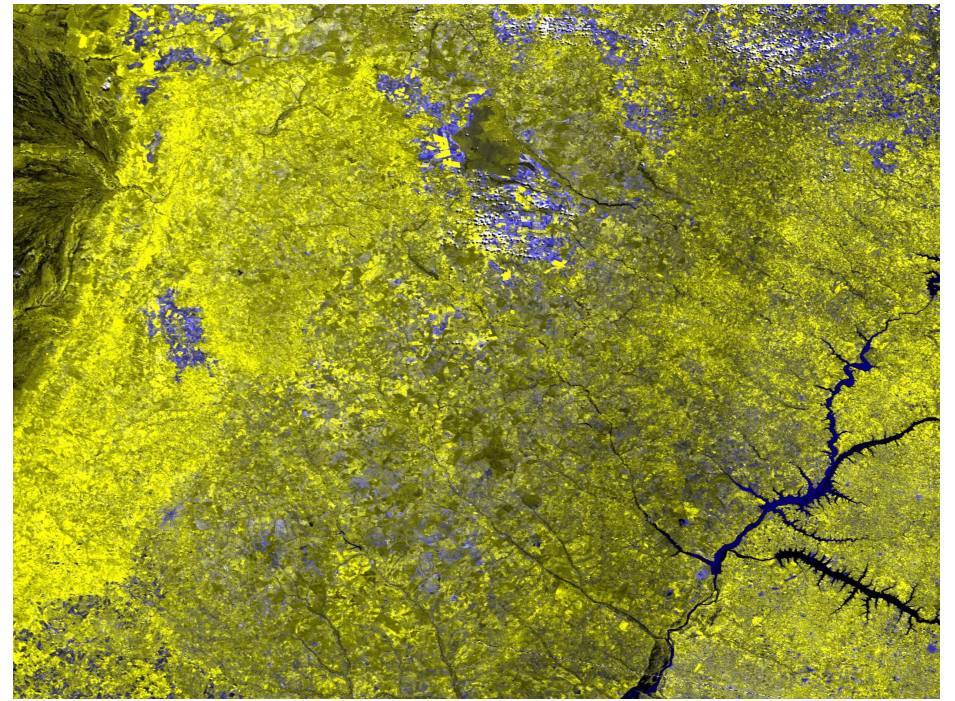
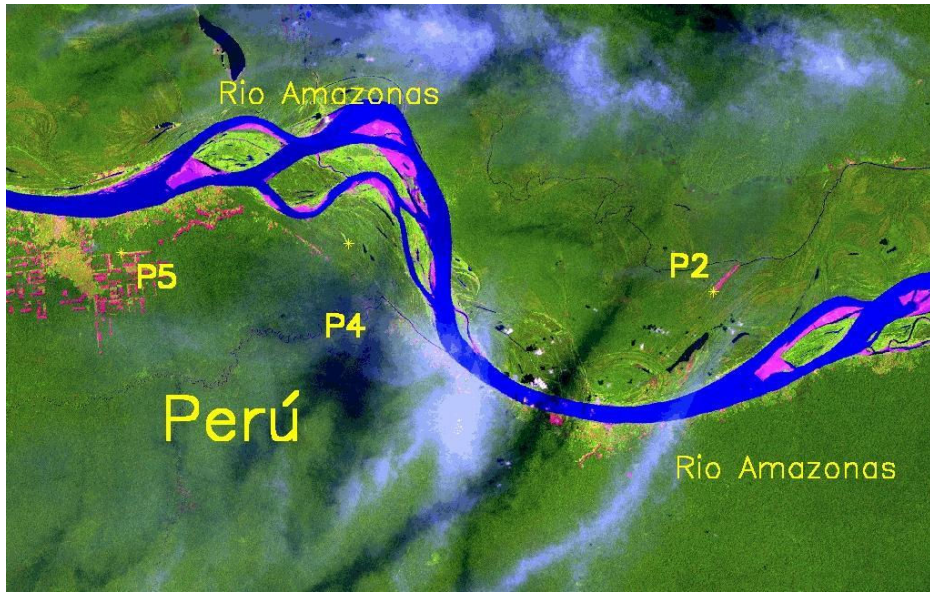


MSS - Landsat
WRS1 248/62
July 07 1973

Band 5 - Red
Band 6 - Green
Band 4 - Blue

Amazon River





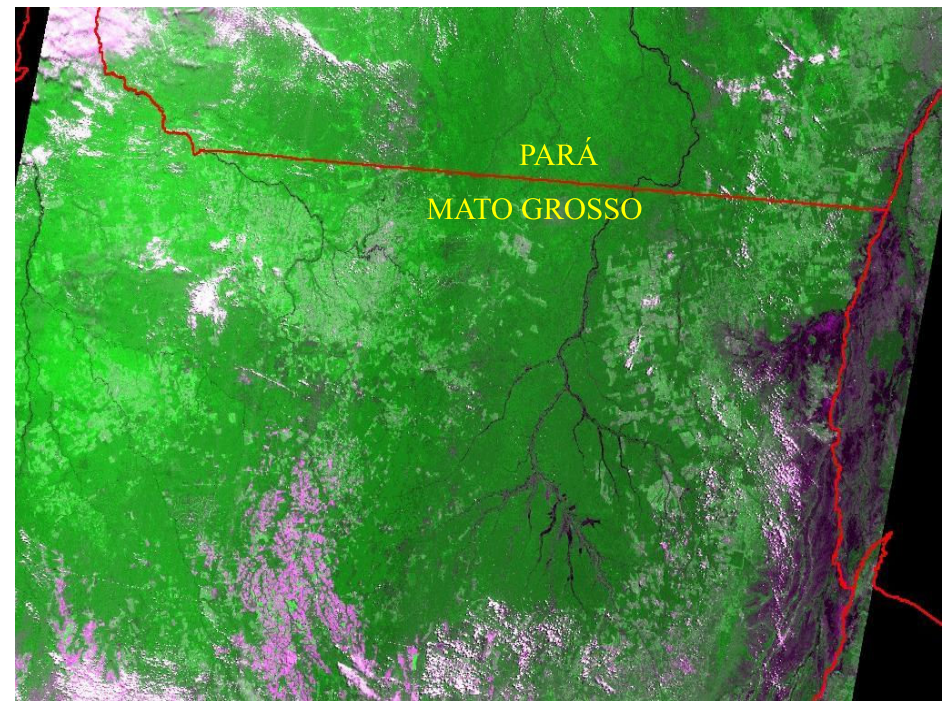
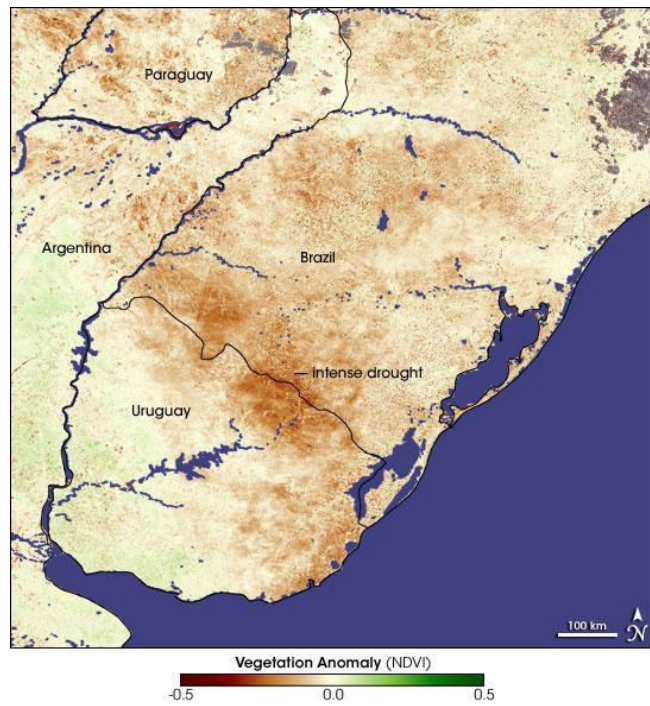


Imagem CBERS-2/WFI 2r1g1b, 26/11/2004 – 13:30 GMT

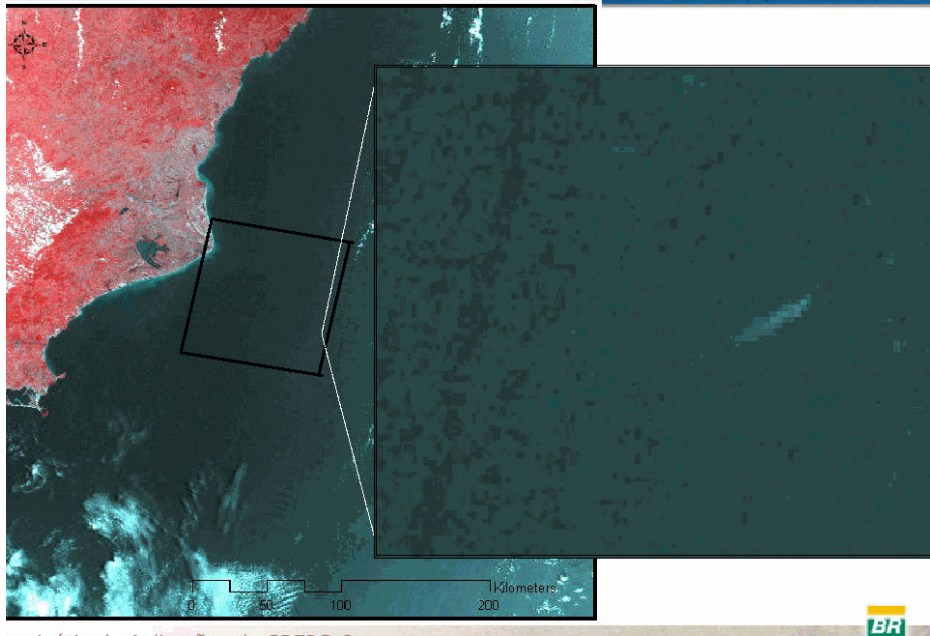
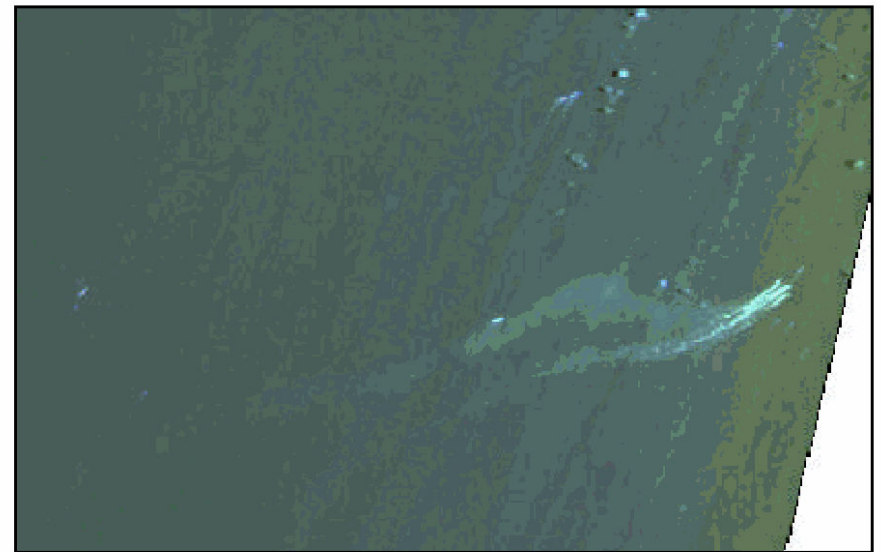
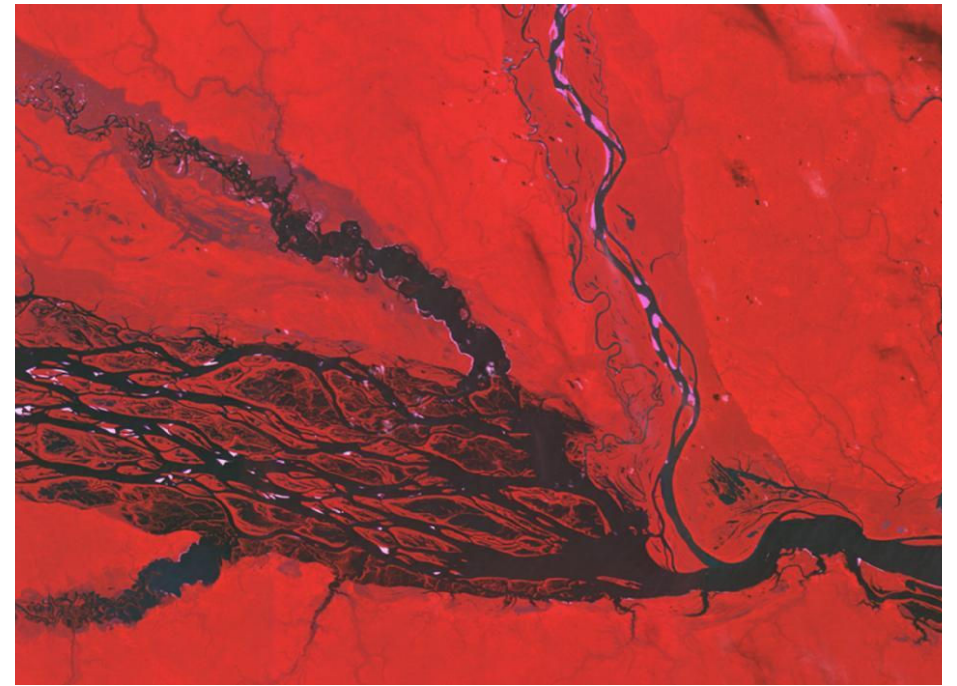
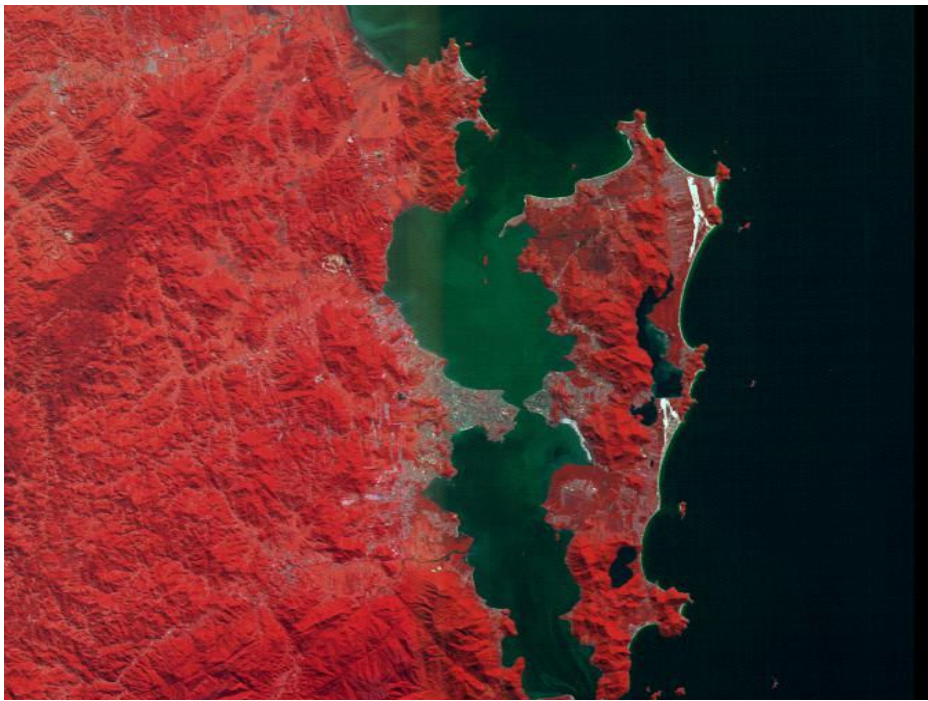
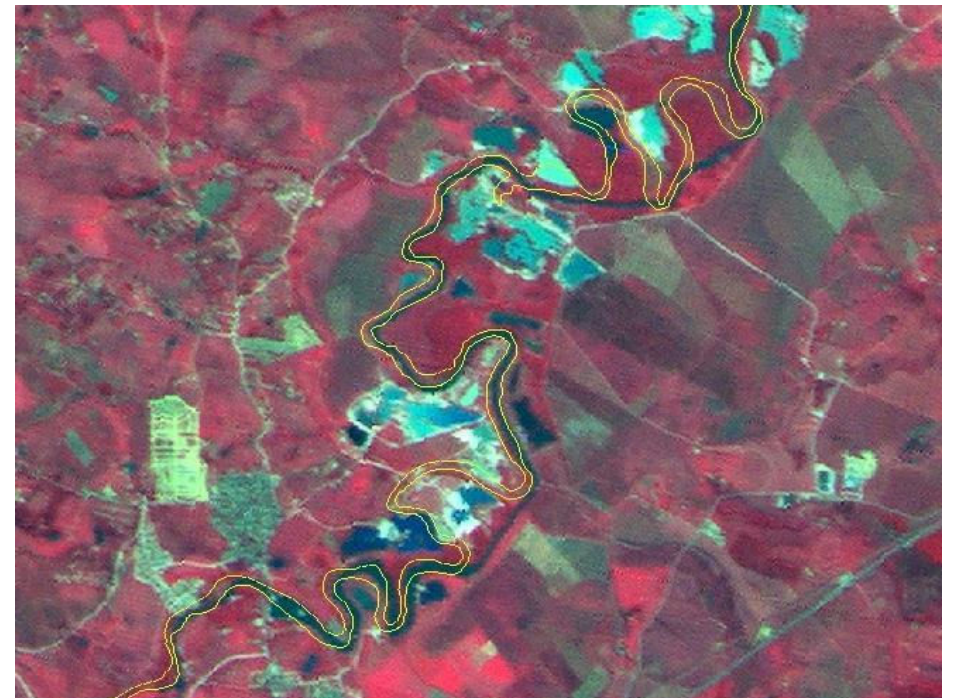
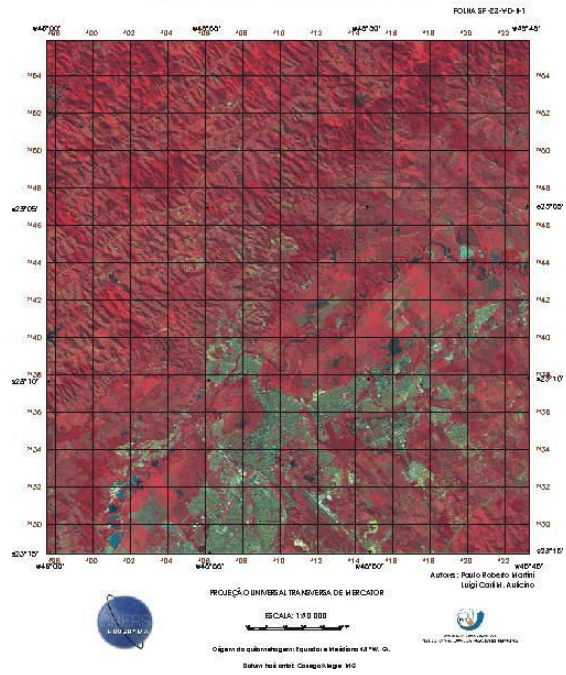


Imagem CBERS-2/CCD 4r3g2b, 26/11/2004 – 13:30 GMT



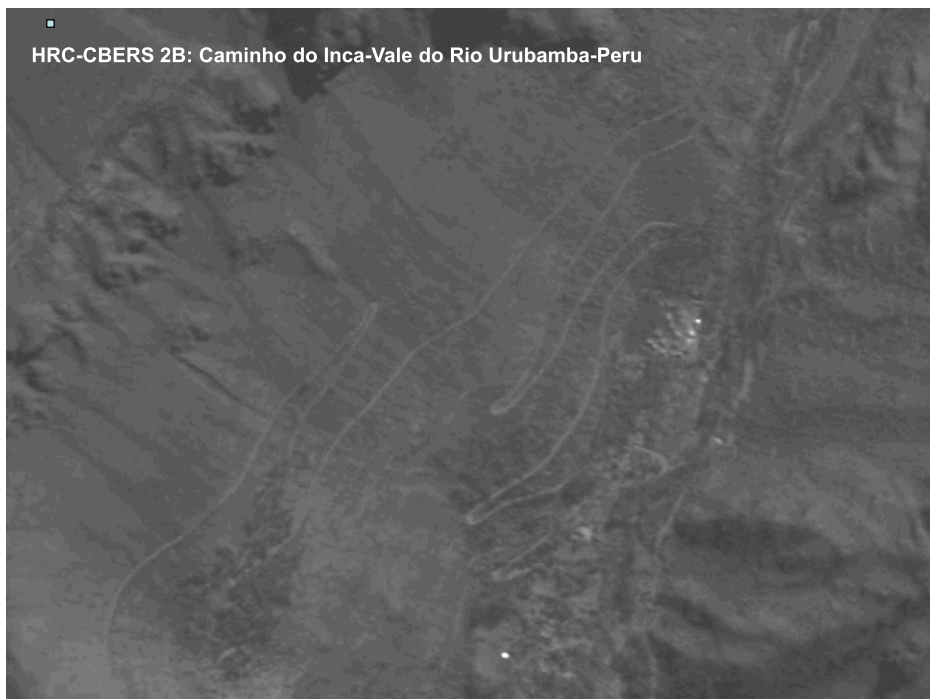
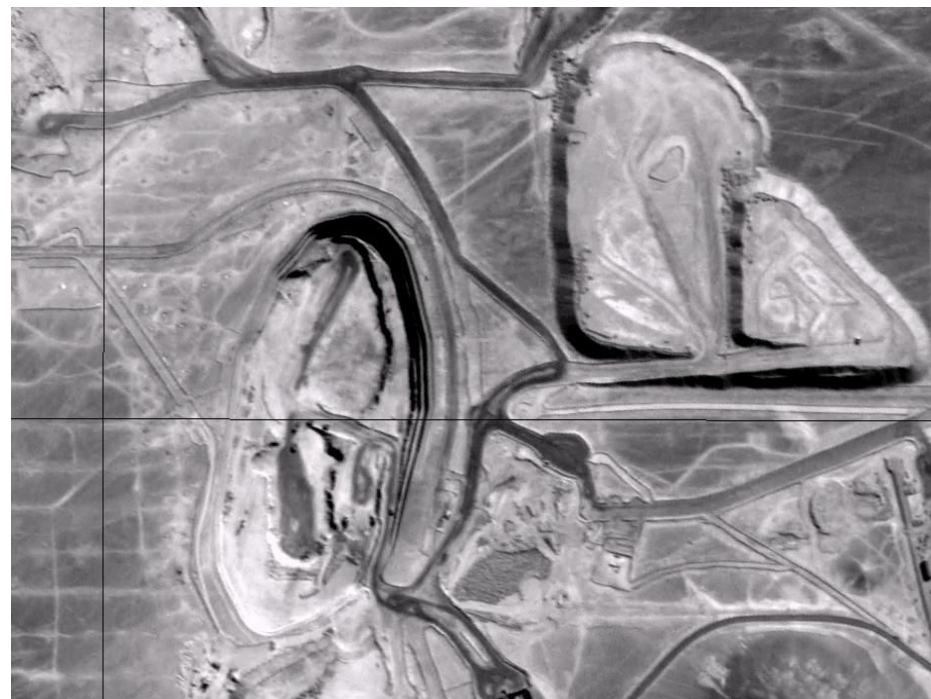


SÃO JOSÉ DOS CAMPOS





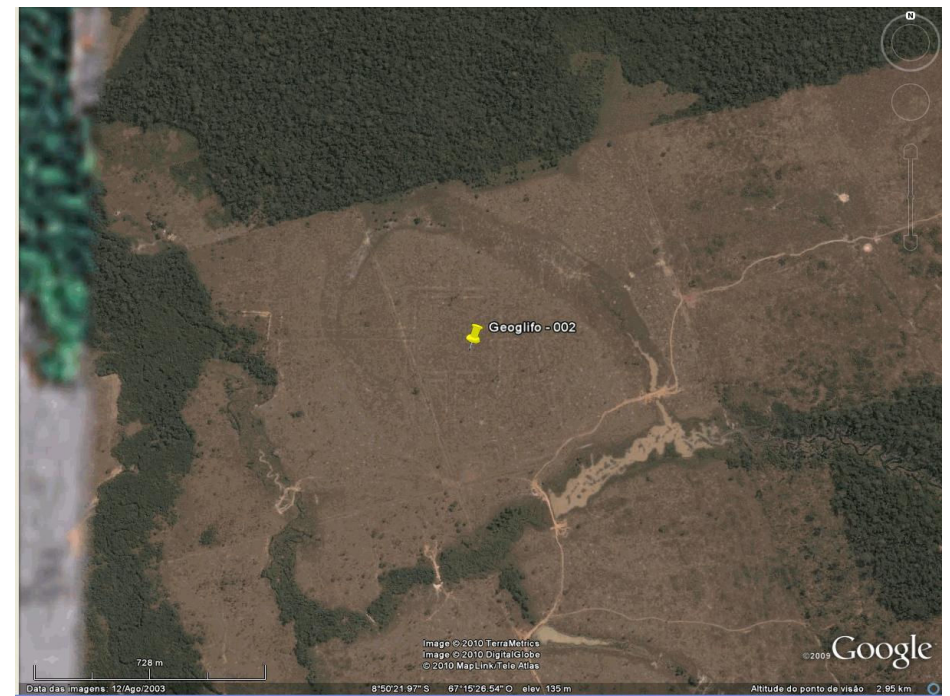
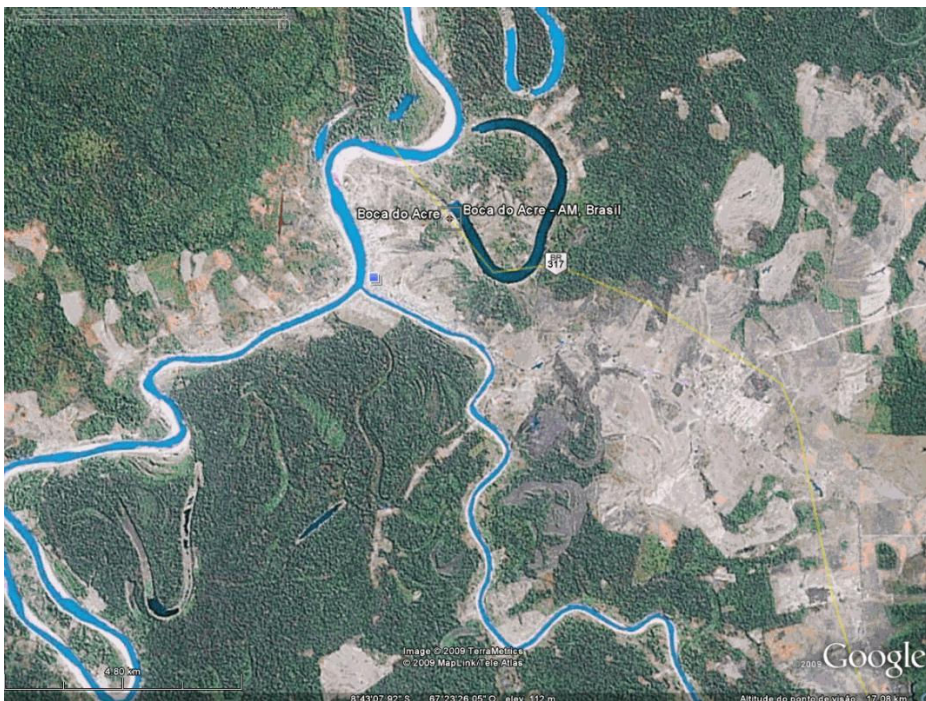
HRC-CBERS 2B: São Sebastião-SP



HRC-CBERS 2B: Caminho do Inca-Vale do Rio Urubamba-Peru

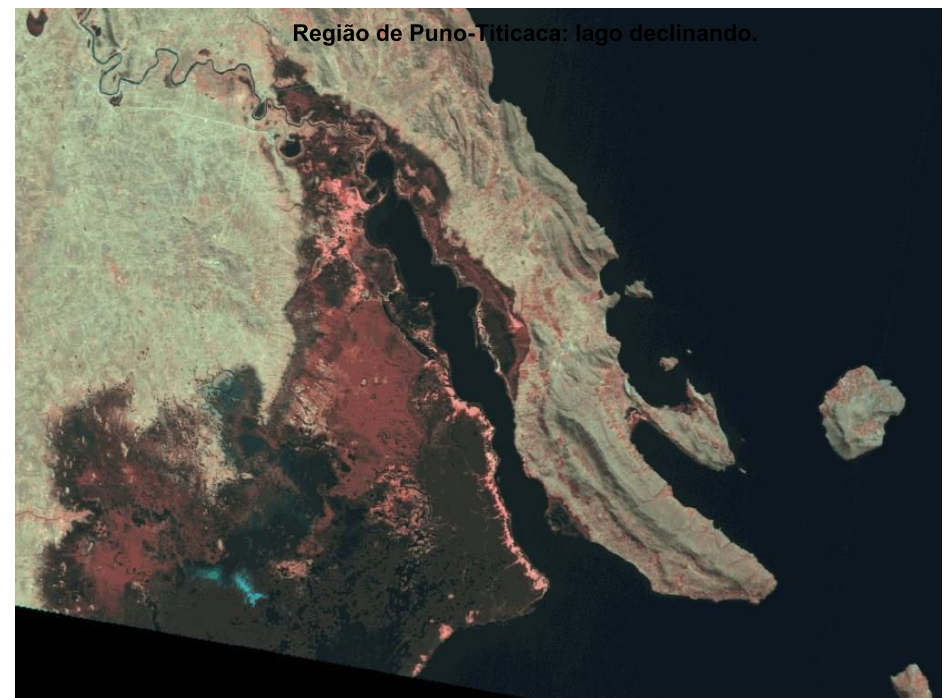


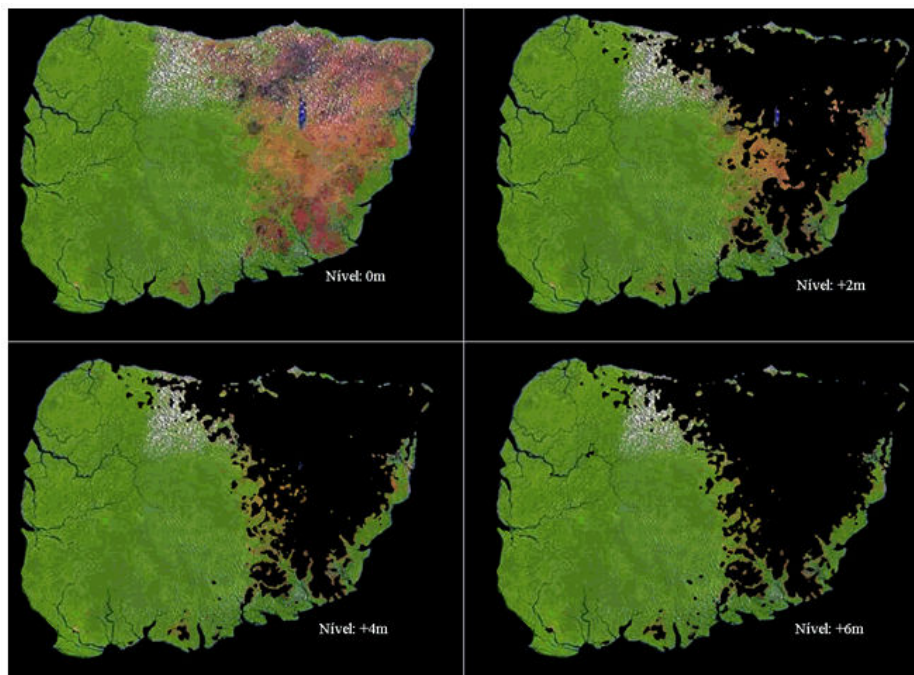
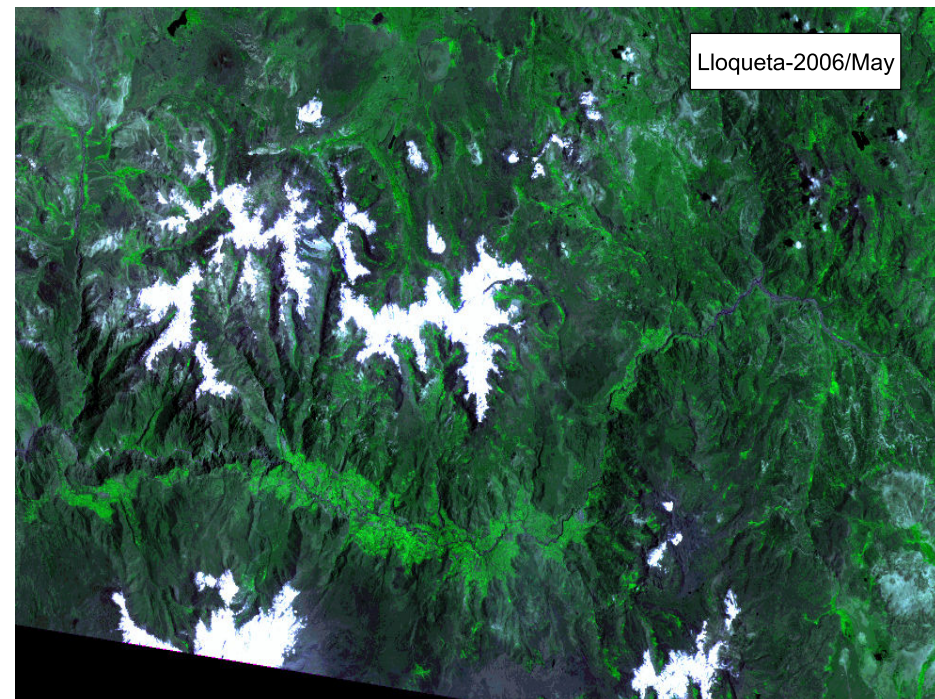
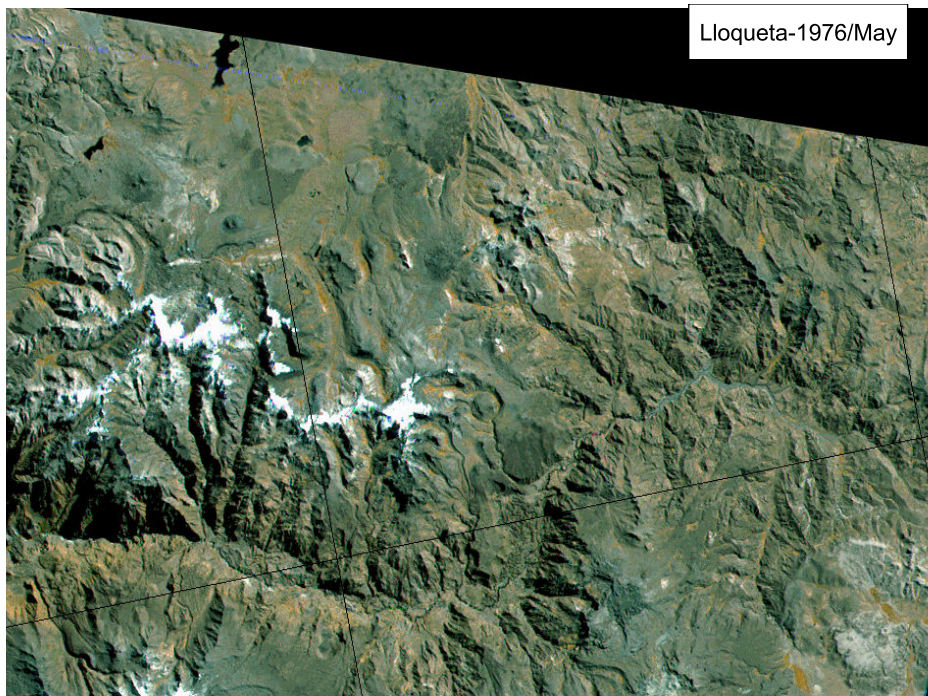
HRC-CBERS 2B: Geoglifo do Piloto (Acre-BR)



Nível do Mar X Áreas Úmidas

- N.M. em Crescimento à base de 2mm/ano
- Groelândia contem água suficiente para elevar o N.M. em 5 metros.
- Antártica Ocidental idem.
- Perdendo-se esta água para os oceanos:
- 1. Metade sul da Flórida inundada
- 2. Cartógrafos remapeando o contorno de todos os continentes
- S.Wear: Physics Today-agosto 2003 p.30-36





Simulação das linhas de costa: Márcio de Morisson Valeriano, sobre imagem TM Landsat INPE/EMBRAPA

MOSAICO NASA GEOCOVER: base do Projeto Panamazônia



LEGENDA DO PROJETO PANAMAZÔNIA II

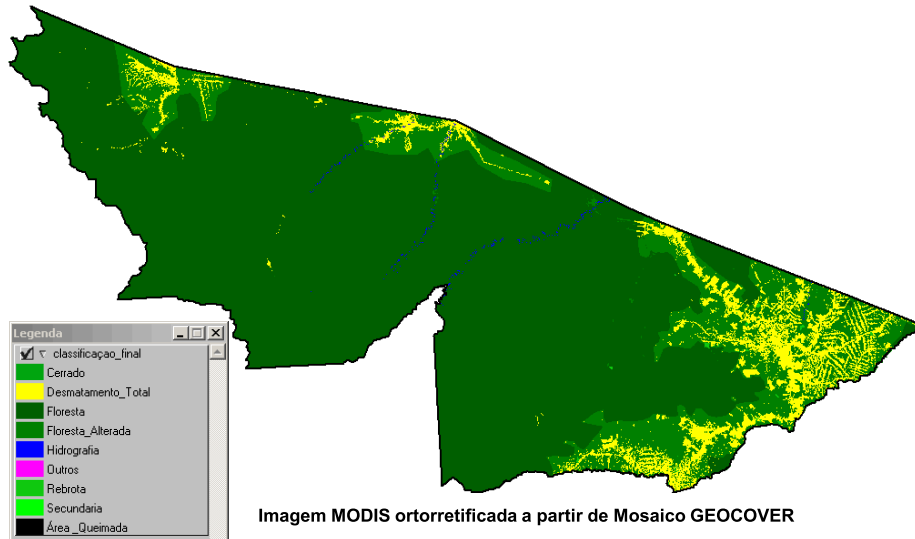


IMAGEM LANDSAT MSS_1980

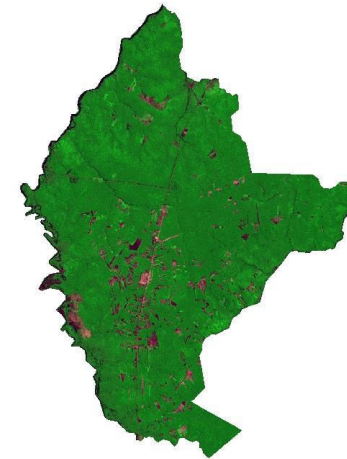
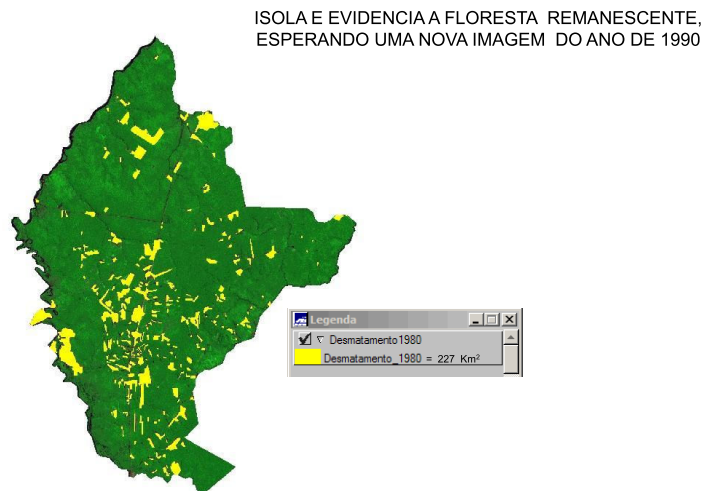
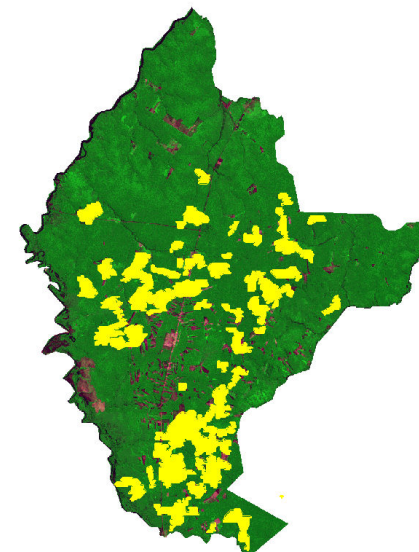


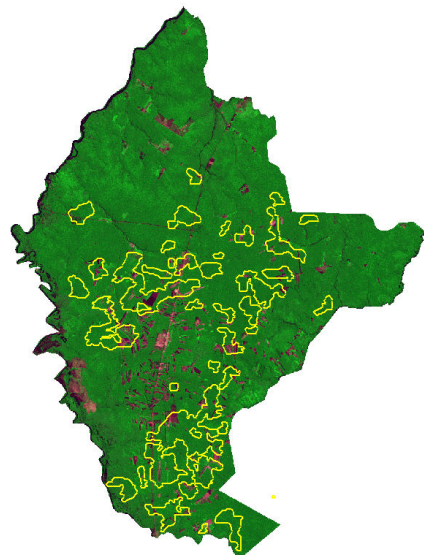
IMAGEM LANDSAT MSS_1980 (DESMATAMENTO 1980)



MAPEAMENTO DA SOJA SOBRE A IMAGEM LANDSAT DE 1980



LINHAS DO MAPEAMENTO DA SOJA SOBRE A IMAGEM LANDSAT DE 1980



Fonte : DSR / Laboratório de Sensoriamento Remoto para Recursos Agroflorestais

QUALIDADE DE MAPEAMENTO DA REPRESA DE BALBINA - AM



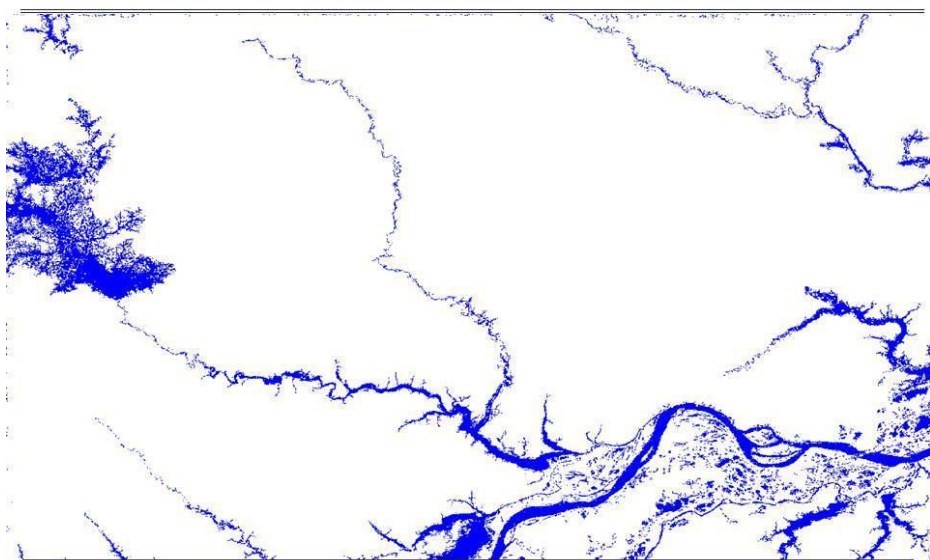
OTCA SELPER



PROJETO PANAMAZÔNIA II

ABC/MRE INPE/MCT

QUALIDADE DE MAPEAMENTO DA REPRESA DE BALBINA - AM



OTCA SELPER



PROJETO PANAMAZÔNIA II

ABC/MRE INPE/MCT

MEDIDAS DO COMPRIMENTO DO RIO AMAZÔNAS = 6.992,15 Km
MOSAICO DE IMAGENS LANDSAT NASA – GEOCOVER – 2000

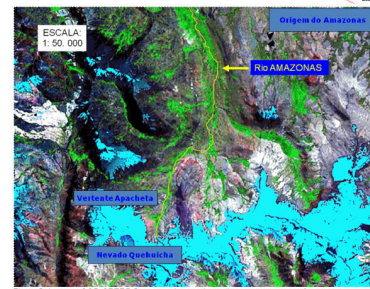
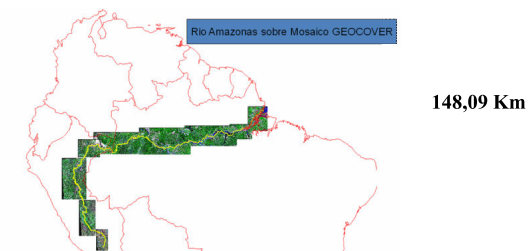


Figura 3. Imagem CCD-CBERS 2 mostrando o conjunto de vertentes que conformam as nascentes do Rio Amazonas no sul do Peru.

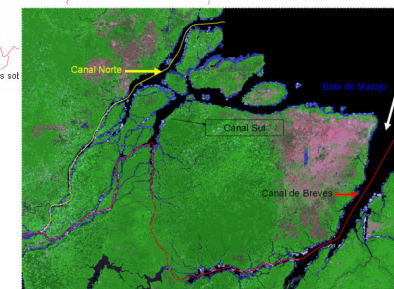


Figura 2. Imagem MODIS mostrando o Canal de Breves no delta estuarino do Rio Amazonas.

MEDIDAS DO COMPRIMENTO DO RIO NILO = 6.852,06 Km
MOSAICO DE IMAGENS LANDSAT NASA – GEOCOVER – 2000

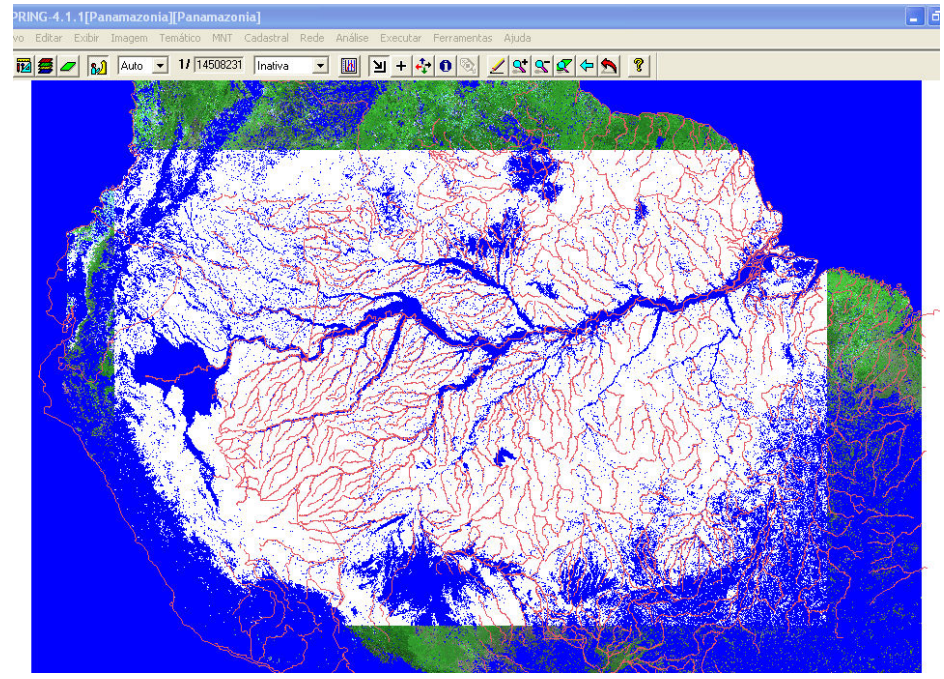
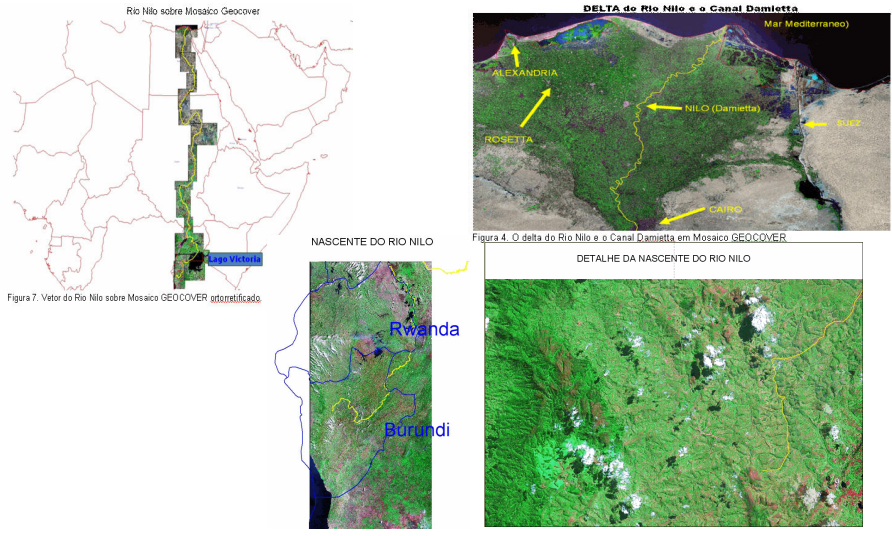


IMAGEM DE 13 SETEMBRO DE 2010
QUEIMADAS = junho+julho+agosto+setembro

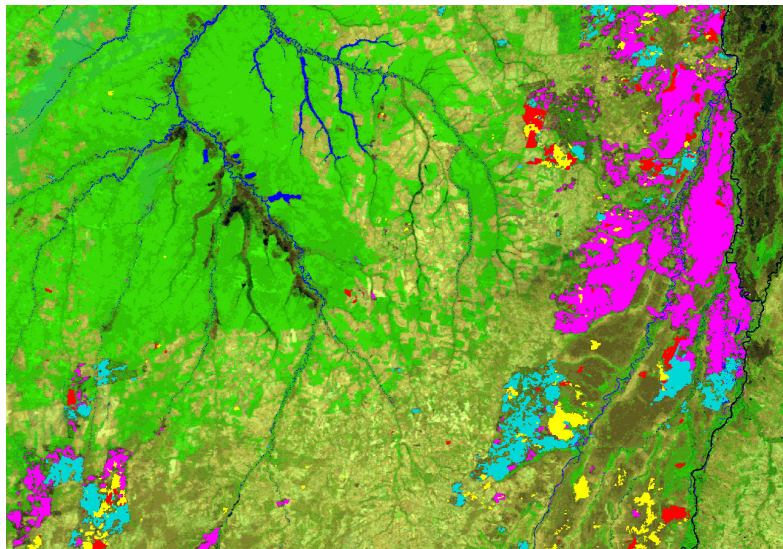
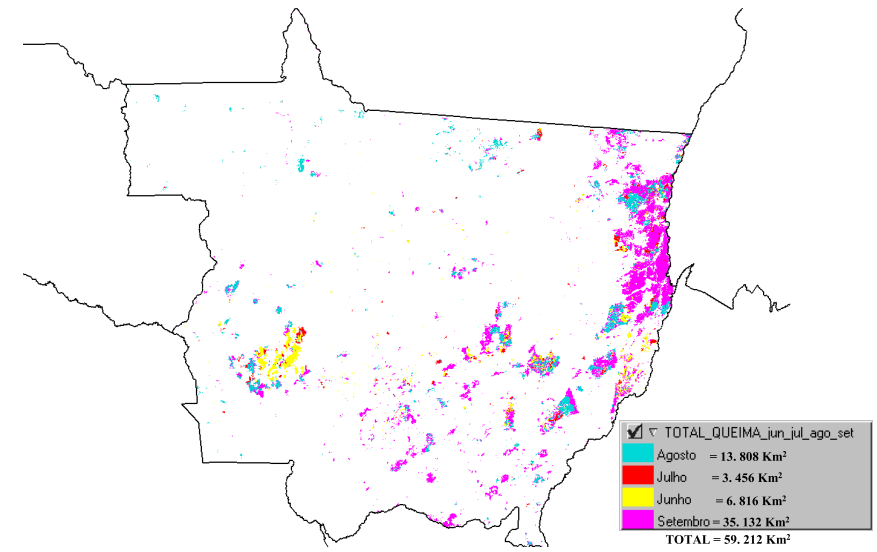
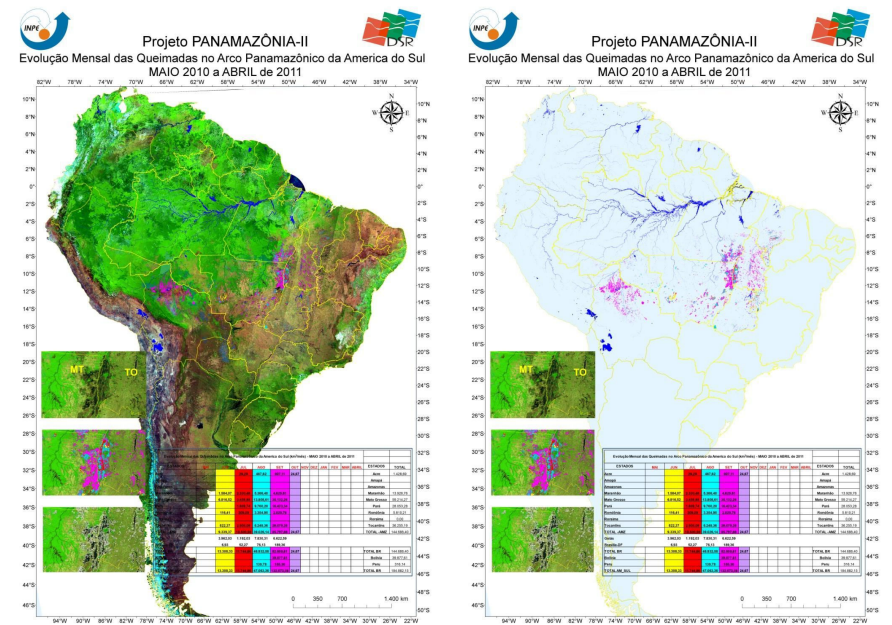
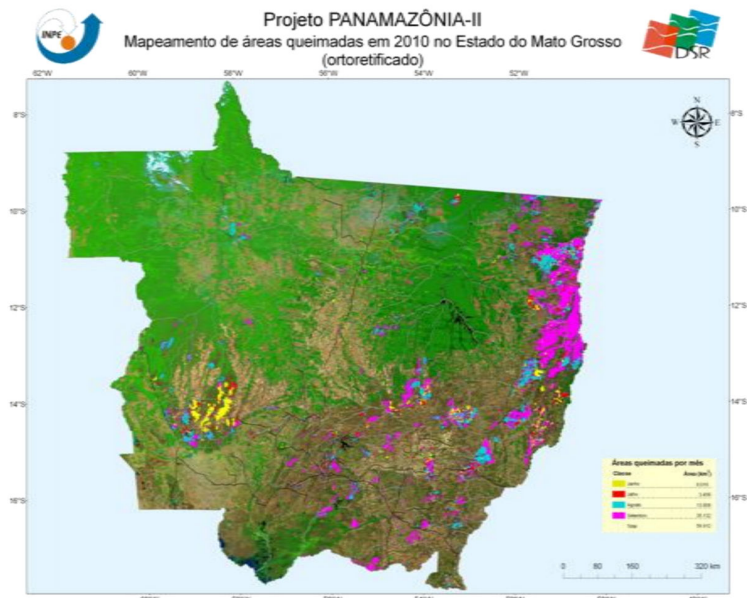


IMAGEM DE 13 SETEMBRO DE 2010

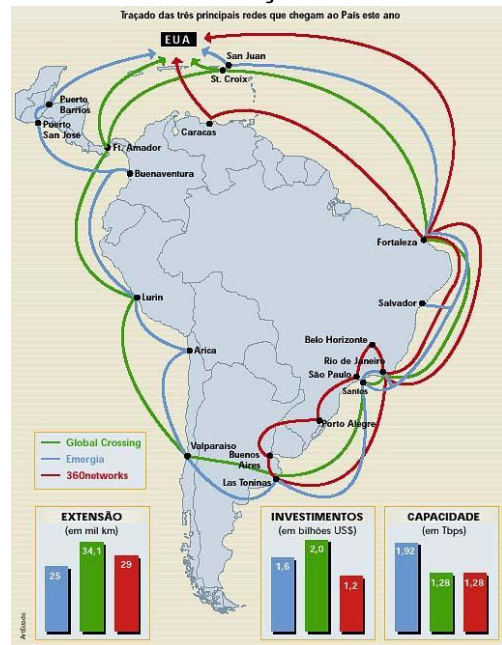




IRS-P6 (Resourcesat1) AWiFS

- Instrumento chave para aplicações no BR
 - 1. resolução: ~60 metros
 - 2. revisita: ~5 dias ou menos
 - 3. faixa no terreno: 740 km
 - 4. quantização: 10 bits
 - 5. bandas: G, R, IR, **SWIR**
- **USDA: “líder mundial na utilização de imagens AWiFS”.**

As Rotas da Informação na América do Sul



Fonte: Estadão